

Anti -beta Actin Rabbit pAb 多克隆

HY22002 100 µl -20°C

Product Information

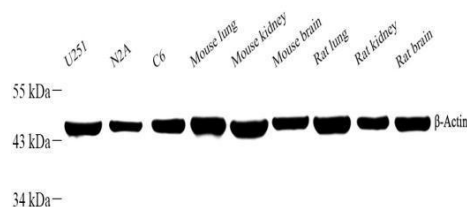
Description	beta Actin rabbit polyclonal
Protein full name	Actin, cytoplasmic 1
Synonyms	ACTB, BRWS1, PS1TP5BP1, Beta-actin, actin beta, Beta Cytoskeletal Actin
Immunogen	KLH conjugated Synthetic peptide corresponding to Mouse β -Actin
Isotype	IgG
Predicted MW.	42 kDa
Observed MW.	45 kDa
Purity	Affinity purification
Uniprot ID	P60709, P60710, P60711

Applications

Applications	Species	Dilution	Positive Tissue
WB	Human, Mouse, Rat	1: 2000	lung, kidney, brain

Storage

Storage	Store at -20 °C for one year. Avoid repeated freeze/thaw cycles.
Storage Buffer	PBS with 0.02% sodium azide, 100 µg/ml BSA and 50% glycerol.

NOTE: This product is intended for research only.**Images**

Western blot analysis of β -Actin (GB11001)
at dilution of 1: 2000

Lane 1: U251 cell lysate

Lane 2: N2A cell lysate

Lane 3: c6 cell lysate

Lane 4: Mouse lung tissue lysate

Lane 5: Mouse kidney tissue lysate

Lane 6: Mouse brain tissue lysate

Lane 7: Rat lung tissue lysate

Lane 8: Rat kidney tissue lysate

Lane 9: Rat brain tissue lysate